

# E-NEWSLETTER

MARINTURK E-NEWSLETTER

Dec 2015

Dear Sea-Lover Friends,

While leaving 2015 behind, we wish all our sailors to have a new year full of health and happiness.

As Marinturk Marinas, with a perspective aiming at meeting requirements and expectations of our sailor friends, we have been providing marina services in Göcek and İstanbul under roof of Yıldız Holding since 2009. We will continue to do new investments in 2016 in accordance with our aim of maintaining high quality services.

Located at the heart of Göcek town which is a favorite stopover for sea lovers, wave breaker jetty project at Göcek Village Port marina will be finished in 2016 with its new mooring services for super yachts above 50m. and annual mooring services for yachts up to 25m. Our goal to perform the firsts among the marinas in Turkey continues with our new project.

We have also new arrangements for mooring area and land area facilities at Göcek Exclusive marina located at Poruklu Bay, amidst the natural beauty of pine trees and unique gardens. We have been conscious about our role in leaving clean seas to next generations and while planning our marina developments in 2016, we will continue our projects for protecting the environment.

We plan to put our investment projects into action also at City Port marina located at Pendik, İstanbul, the most beautiful city in our country and in the World.

We are embracing the new year with innovations for our Sea-lover friends as Marinturk Marinas.

We hope your compass points Marinturk Marinas and you have a new year full of health and happiness.

Mahmut KAYACIK  
General Manager

---

*“Located at the heart of Göcek town which is a favorite stopover for sea lovers, wave breaker jetty project at Göcek Village Port marina will be finished in 2016 with its new mooring services for super yachts above 50m. and annual mooring services for yachts up to 25m. ”*

*- Mahmut Kayacik*

---

## Index

- Our Team
- İstanbul City Port Winter Campaigns
- New Cafeteria at Göcek
- Concept Marine back in İstanbul City Port
- Special Gift Coupons
- Prepare your yacht for winter
- Repair & Maintenance Services
- Safety and Health at work place
- Rixos Premium Göcek

## Our Team



### MARINTURK GÖCEK TEAM

#### **AKBULUT KAHRAMAN;**

Director  
Yıldız Technical University  
Naval Architecture and  
Marine Engineering  
Married and have one child  
Team member at Marinturk for 7 years



#### **HAZAL BALABAN**

Deputy Manager  
Graduated from Ankara University  
English Language and Literature  
Married  
Team member at Marinturk for 7 years



#### **SERDAL AYAN;**

Boatyard Chief  
Graduated from Pendik  
Primary School  
Married and have two children  
Team member at Marinturk for 7 years



#### **NURAY ÖZTÜRK**

Front Office Chief  
Graduated from Anadolu University  
Tourism and Hotel Management  
Married and have one child  
Team member at Marinturk for 6 years



#### **İDRİS DEMİREL**

Senior Berthing Master  
Anadolu University - Public Administration  
Married  
Team member at Marinturk for 6 years



#### **SÜLEYMAN GÜNDOĞRU**

Technical Services Chief  
Graduated from Acipayam High School  
Married and have two children  
Team member at Marinturk for 7 years

### MARINTURK İSTANBUL TEAM



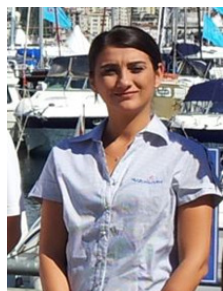
#### **ÖMER FARUK ERTEM**

Marina Manager  
Graduated from İstanbul University  
Radio&Tv  
Graduated from Anadolu University  
Management  
Married and have two children  
Team member at Marinturk for 7 years



#### **BARBAROS TURAN**

Senior Berthing Master  
Graduated from Marmara University  
Sports Academy  
Married  
Team member at Marinturk for 2 years



#### **DENİZ ŞAHİN**

Front Office Chief  
Graduated from Süleyman Demirel  
University Tourism Guidance  
Married  
Team member at Marinturk for 2 years



#### **SELAMİ KAZAN**

Technical Services Chief  
Graduated from Eskişehir University  
Electric Power Branch  
Married with 2 children  
Team member at Marinturk for 4 months

## Land Ho!

Boatyard Winter campaign continues in Marinturk İstanbul Cityport. Campaign includes 3 days free land parking, 20% discount for lifting and launching and 50% discount for extra hard standing.

This campaign is valid for the operations between the dates of 15.11.2015 - 15.03.2016.

Please contact Front Office department to benefit from this opportunity.



**KARA GÖRÜNDÜ**  
MARINTURK İSTANBUL CITY PORT'TA KAÇIRILMAYACAK ÇEKME KAMPANYASI BAŞLADI

15.11.2015-15.03.2016 TARİHLERİ ARASINDA:

Çekme-Atma hizmeti alacak teknelere 3 gün ücretsiz karapark ve %20 indirim.

Ayrıca ilave karapark hizmetine %50 indirim.\*

MARINTURK  
MARINAS & BOATYARDS  
www.marinturk.com.tr

Marinturk İstanbul City Port Boatyard Campaign

## “Concept Marine” is back in İstanbul City Port

Established in 2004 with the partnership of Moris Algazi and Haluk Gündoğdu, Concept Marine is the distributor company of leading yacht brands in the world including Azimut, Frauscher, Otam, Rockharbour. Along with this, Concept Marine provides manufacturing, technical services and brokerage. We are glad to have Concept Marine among our business partners.



ConceptMarine



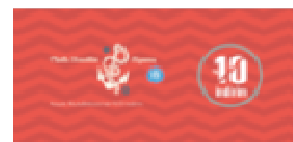
## New Cafeteria at Göcek Village Port Boatyard

Our dining hall has been opened on the second floor of the management building at boatyard area with the supplier company, Lykia Catering providing minimum 4 kinds of meals and open salad bar with special fix price. The cafeteria is open for all guests.



## Special Gift Coupons

“Marinturk City Port Çarşı” welcomes you with the opportunity to meet numerous products at shopping center. The gift coupons will be sent to your address if requested. Valid until the end of February, coupons could also be collected from Marina Office.



## Prepare your yacht for winter

To prevent any deterioration in the condition of the vessel during winter period

- Fit dehumidifier
- Check condition of batteries, specific gravity check, high load drop test & report condition. Top up levels as required and ensure that they are on charge.
- Leave cabin and cupboard doors open to allow ventilation
- Remove any perishable food items from fridges and lockers
- Clean out fridge / freezers and prop open door to allow ventilation
- Flush through toilets with fresh water
- Check holding tanks are empty and flush through with tank cleaner
- Close of sea cocks (leave notice to say sea cocks closed) Leave open cockpit drain and bilge sea cocks & sink if dehumidifier is drained into sink
- Fill up diesel tanks
- Check gas bottle switched of at bottle
- Set out extra shore lines and ensure fenders are in place for anticipated winter gales
- Carryout visual mast and rigging inspection
- Monthly soapy washdown of decks and cockpit areas to prevent build up of dirt, pollution & bird deposits



Once the vessel is no longer in use;

- Remove mainsail, genoa, stackpack / sail covers
- Remove sprayhood, Stow awnings & covers below
- Remove all moveable deck equipment & stow below
- Check through lockers, clean, tidy and stow below anything that may deteriorate over the winter

Use these general guidelines to help tuck your boat in for her winter's nap — and hitting the water next season will be as smooth and easy as a warm spring afternoon. While these tips will certainly get you started, there will be variations depending on the type of boat you own. Your boat and engine owner's manuals can offer specific recommendations for winter preparation. In addition, your boat dealer or marine service engi-

## Repair and Maintenance Services



Due to the natural conditions at sea, all floating vessels get worn off over time and require proper maintenance. Repair and maintenance services have become necessary operations for all vessels to extend their life span. These services are not to be done as pleased, instead they are mandatory if you prefer continuous sail practice. We recommend you to contact experienced and expert technical service teams. Marinturk Marinas service Company tenants are ready for different types of repair and maintenance services at your request.



## Personal Protective Equipments are vital at work place

During the performance of any works done in boatyard area, we thank you for being carefull about using the necessary personal equipment and gears (such as, work boots, work gloves, mask, safety goggles, safety belt, helmets etc.) as well as following the safety guidelines. The necessary occupational safety rules are on the bulletin board at the boatyard entrance.



## Your Safety and health at work place is important for us

According to the data provided in 2013 by Occupational Safety and Health Administration (OSHA), over 1 million work related accidents occur everyday all around the world as well as 4,932 work related health issues surface and 1,096 lives are lost due to work related accidents. In Turkey on daily basis, 205 work related accidents take place. As a result of this, 2 lives are lost and 6 people become unfit to perform work due to job related injuries everyday. You can reach these statistics from below links.

**Source:** <http://www.csgeb.gov.tr/csgebPortal/ShowDoc/WLP+Repository/per/dosyalar/duyurular/isgm>

Due to the numbers of serious injuries and deaths caused by work related accidents, the subject of health and safety at work place has become an important matter to protect interests of valuable and qualified members of the workforce. The legal obligations and rules should not be set to discourage, but rather set to protect the health and safety of the employees.

As Marinturk Marinas our prior purpose is to provide and maintain a healthy and safe work enviroment for our employees, the 3rd party contractors and our valued guests. We have full faith in everyone who has the privilege to be part of us, is as sensitive as us on the matter.

During the performance of any works done in this area, we thank you for being carefull about using the necessary personal equipment and gears (such as, work boots, work gloves, mask, safety goggles, safety belt, helmets ect.) as well as following the safety guidelines.

The necessary occupational safety rules are on the bulletin board at the boatyard entrance. For more infomation you can benefit from brochure which is prepared by our safety adviser Mavi Deniz Occupational and Safety Unit.

### ROLLING PORTABLE SCAFFOLD Structural Rules Of The Scaffold

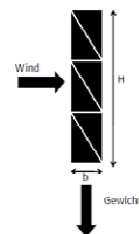
- According to rolling scaffolds, rollers must have brake or stabilizer.
- The ground of platform must not include space.
- Working platform must have strawman which is minimum 90 cm high in full and has intermediate constituent once in every 45 cm.
- Working platform must have baseboard which is minimum 5 cm high in case of falling.
- Structure of the scaffold must be solid structure.
- Against the possibility of overturning, highness of the scaffold/wideness of the scaffold (point of support) must be minimum 1/3

**If the scaffold's structural suitability is inconvenient, It won't be permitted to be used.**



### Scaffold instructions

- The scaffold must be inspected prior to using it.
- The scaffold should be used at smooth, straight, dry and rigid areas.
- Before using the scaffold, emergency brakes should be locked.
- While working on the platform, safety harness should be used.
- Do not move the scaffold while a person or equipment is on it.
- Use the rungs/steps. It is forbidden to climb and leap from the rungs.
- Don't leave any materials on the scaffold.



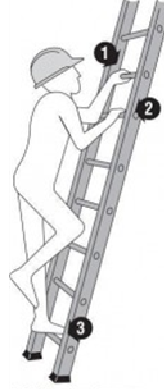
Towers are stable if:

$$b : H < 1 : 3$$

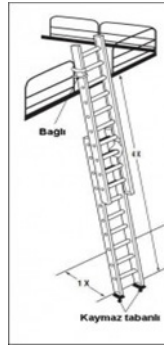


## Ladder Safety

- Ladders should only be used for short period and low risk works.
- Always inspect the ladder prior to using it.
- A person should support from the bottom if the ladder is not fixed. Non fixed ladders should not be used by one person.
- Do not work off the top three rungs, and try to make sure the ladder extends at least 1 m (three rungs) above where you are working;
- Make sure the ladder angle is at 75° – you should use the 1 in 4 rule (ie 1 unit out for every 4 units up)
- The maximum period to work on a ladder is 30 min.
- Always maintain a 3-point (two hands and a foot, or two feet and a hand) contact on the ladder.
- The ladder should not be put at the entrance of a door unless it is necessary. Barricade tape should be used while working at a door entrance.
- Maximum weight capacity to carry on a ladder is 10 kg.
- Both feet should be set on the ladder while working on it.
- Please inform safety before starting to work nearby power lines.
- Ladders should not be used in the following situations:
- When the materials used during work pose an extra dangerous situation.
- When the materials used during work should be held with both hands.

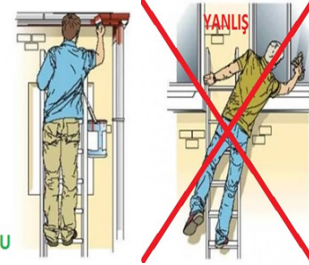


3 Nuktandan temas sağlanmalıdır



## Folding Ladder Safety

- Do not use damaged ladders (cracked, worn, bent or loose rungs)
- Use a ladder only on a stable and level surface, unless it has been secured to prevent displacement.
- Ensure any locking devices are engaged. Do not use ladders without locking devices
- Do not try to access another level from the folding ladder
- Do not step on the top three rungs.



DOĞRU

## Use of Hand and Portable Power Tools

- Do not use frayed or damaged electrical cords, hazardous connections.
- Use your personal protective equipment if necessary.
- Do not leave the tools unattended.
- Do not try to plug in the cables that have had their sheathing removed.
- Remove the plug carefully by hand rather than pulling a plug from a socket by jerking the cord.

## Rules for Power

- Inform the technical services about any electricity problems
- It is dangerous for anybody rather than the technical services respond to the electricity problem
- Do not use frayed or damaged electrical cords, hazardous connections
- Do not use water close to wall box, do not pour water on the box.
- Do not move isolator placed under boxes.



## Working at Height

- All works over 2.5 metres above the ground is accepted as Works at height. Work at height permit document must be prepared approved by the superior.
- Works at height require use of helmet and full body safety harness. Learn how to use safety harness.
- Do your Works on the ground or far away from the height as much as possible.
- Take suitable and sufficient steps to prevent the fall of any material or object. Never throw anything to the ground.
- Use barricade tape around work place
- Do not work at height if you have dizziness, fear of height, high blood pressure.

## Rules for Crane-mounted baskets

- Baskets should have periodical check documents
- Crane operator should have valid operating certificate.
- The railings of the baskets should be minimum 120 cm.
- Baskets should have minimum 5cm base.
- Helmet and safety harness should be used for Works on baskets.

### Trainings for Firefighting

Your health and safety is important to us. As Marinturk Marinas, we believe that the factors that may cause fire must be understood in detail so that they can be kept under control and eliminated before they cause any threats. As for a fire outbreak, the most important step to take is to interfere with it on time and effectively. Trainings to interfere with a possible fire outbreak become important. So trainings are carried out in Göcek and İstanbul marinas under supervision of "Etki Akademi" training Company.



### DID YOU KNOW



- When there is a notice, it takes approximately 30 seconds for the team to prepare fully and get into action.
- When a house is on fire, the heat of the fire rise to a minimum of 900 degrees celsius
- Oxygen tupe explodes if grease or mineral oil contacts onto the metal parts of the valve
- A fully equipped fire brigade truck worth around the value of two houses.
- The weight of the equipment of a fire fighter is around 15 kilograms.
- The pressure of water sprayed from the fire brigade truck can open a hole on the wall or can drag a car.
- Special uniform of the firefighters can ensure safety until 500 degrees celsius
- A fire fighter must have the knowledge of a teacher, a doctor, an engineer, a psychologist, and a chemist when it is necessary
- The main reason of the death due to the fire is not burning, but hazardous smoke inhalation
- The first fire fighters of the Turkey were the roughnecks of Ottoman Empire named Tulumba-ci. They went to fire places yelling and singing folk songs and there was a competition between the other roughnecks of the neighborhood.
- The carbonmonoxide can kill a person after just three inhales.
- A fire brigade truck has to arrive to the incident site in 6 minutes according to the world standards.
- When a cigarette is lit, the heat reaches to 1204 degrees fahrenheit, which corresponds to 700 degrees celcius
- When a spark causes fire, it takes 2.5 minutes for the flames to reach to the height of one meter

Source: <http://itfaiye.denizli.bel.tr/default.aspx?k=haber-detay&content=1&id=267#.vIwdtxbhc8>

# Rixos Premium Göcek Villas

Stretching across a secluded bay, Rixos Premium Göcek Villas presents a stunning natural beauty, restorative peace, indulgence and tranquility.

Located a short 10 - minute speed boat ride from the Resort, The villas offer an environment of exclusive and sophisticated elegance, whether you are seeking a romantic gateway or an exotic destination for your family. Rixos Premium Göcek offers 14 villas each with their own swimming pools and direct access to the beach. The private and spacious villas are available with two or five bedrooms making them the ideal accommodation for both families and couples.

## Executive Villa

The Executive Villa is a secluded two storey structure with 210 indulgent square meters of living space. The villa offers two bedrooms with two spacious bathrooms, a living room, a kitchenette, a dining terrace table, a private swimming pool and a direct access to the villas exclusive Beach.



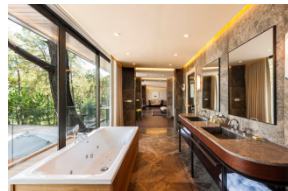
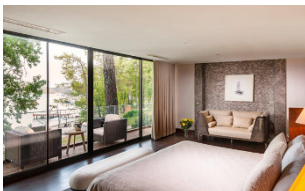
## Superior Villa

The Superior Villa is a secluded two storey structure with 420 indulgent square meters of living space. The villa offers five bedrooms with spacious bathrooms, Master bathroom with Jacuzzi, Sauna room, a living room, a kitchenette, a dining terrace table, a private swimming pool, a direct access to the villas exclusive Beach and an exclusive pavilion at the beach. All villas are equipped with high speed Wi-Fi internet access and home theatre with DVD Player.



## Rixos Premium Göcek Villas feature

- Complimentary Airport Pick up and Drop OFF
- Private Boat Tour once per stay
- Priority access to Rixos Premium Göcek Restaurants, Bars and facilities
- Priority Booking at Anjana Spa
- Personalized private Butler service
- Private Chef for Villas
- Exclusive Reception
- Exclusive Club serving gourmet International cuisine around the clock
- Exclusive lounge under the pine trees



Europe's Leading Marina & Villa Resort 2015



Rixos Premium Göcek Suites & Villas



[www.rixos.com](http://www.rixos.com)

**RIXOS**  
PREMIUM GÖCEK  
SUITES & VILLAS